

# *ITEC engineering*

**Rockwell  
Automation**

Recognised  
System  
Integrator

Control

Installation - Service - Maintenance  
**Ism•ATEX**  
INERIS 



# ITEC engineering

We carry each project through every stage of its development, from Front End Engineering to commissioning.

We listen to your needs and deliver a solution especially designed for your company. We provide a service that meets your requirements while committing to the strict technical guidelines that are required in today's operating environments.

## Field Development Consulting

- ◇ Reserves Evaluations/Contingent Resources Assessments
- ◇ Engineering & Economic Services
- ◇ Development Planning (FDP –RMP- OS)
- ◇ Prospective Resources Assessments
- ◇ Reservoir Simulation
- ◇ Engineering Resources Assessments



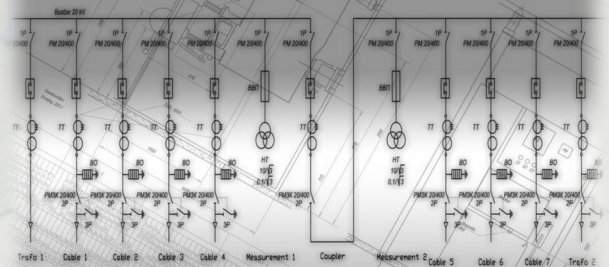
## Instrumentation Studies

- ◇ Instrumentation Single Line Diagrams
- ◇ Loop Diagrams
- ◇ Marshaling Studies
- ◇ Cable Lists
- ◇ Junction Boxes Wiring / Location Diagrams
- ◇ Cable Tray Support Layout / Detail
- ◇ Explosive Atmospheres Studies



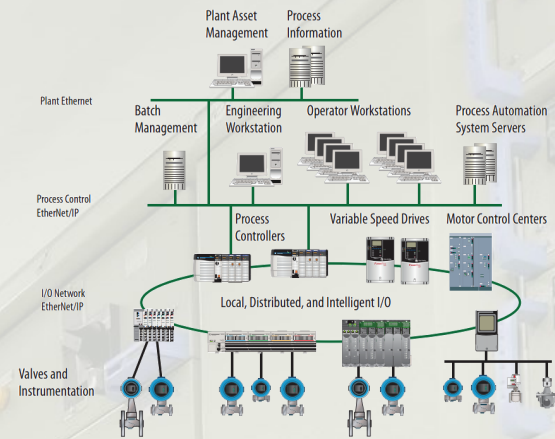
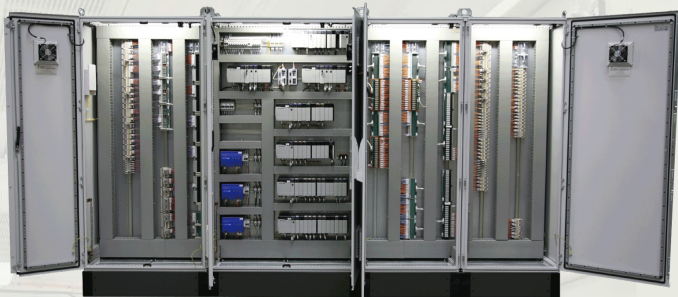
## Electrical Studies

- ◇ Feasibility studies
- ◇ High / Medium / Low Voltage
- ◇ Distribution Networks Design
- ◇ Selectivity Studies
- ◇ Single Line Diagrams
- ◇ Load Flow and Short-Circuit Calculation
- ◇ Power Balance
- ◇ Detailed studies



## Automation Solutions

- ◇ Process Control Systems (PCS)
- ◇ Safety Instrumented Systems (SIS)
- ◇ Fire & Gas Protection Systems (F&G)
- ◇ Power Management Systems (PMS)
- ◇ Power Distribution Control Systems (PDCS)
- ◇ Plant Information Management Systems (PIMS)
- ◇ Supervisory Control and Data Acquisition (SCADA)
- ◇ Industrial Networks
- ◇ Video Surveillance Systems (CCTV)

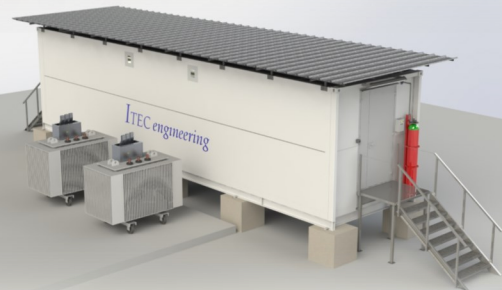
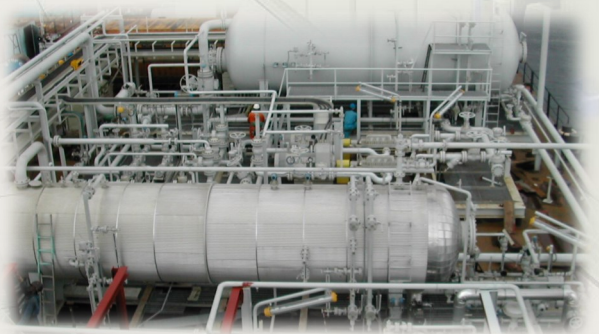


## Panel Assembly

- ◇ Motor Control Centers
- ◇ Low / High Voltage Switchgears
- ◇ Automation Panels
- ◇ Explosion Proof Enclosures (Exd)
- ◇ Increased Safety Panels (Exe)
- ◇ Pressurized Panels (Exp)
- ◇ Intrinsically Safe Solutions (Exi)
- ◇ Certified Engineers 

## Modular Shelters

- ◇ Polyester Sandwich Panels
- ◇ Welded Steel Shelters
- ◇ Bespoke containers
- ◇ 3D Design
- ◇ Pressurization, Air Conditioning
- ◇ Fire Detection / Protection



## Site Services

- ◇ Construction Supervision
- ◇ Pre-Commissioning
- ◇ Commissioning
- ◇ Startup
- ◇ Operator Training

## Purchasing Service

ITEC Engineering has the full range of resources required to purchase supplies, specific subcontracting services and equipment on behalf of its clients.





2 rue Isaac Newton  
ZAE2 - Les Portes de l'Oise  
60230 Chambly  
France

Email: [Web@itec-engineering.com](mailto:Web@itec-engineering.com)  
Web site: <http://www.itec-engineering.com>  
tel. : +33 (1) 30 28 81 90  
fax : +33 (1) 30 28 81 01



Follow us :



***ITEC** engineering*